

# \_next collection

BY EXPOR MANEQUINS





*CREATE TO INSPIRE*



## Next Collection

Plural, realistic and connected  
to change.

Mannequins with slightly  
accentuated curves, further  
valuing the trim of your pieces.

A dynamic, versatile collection  
that suits all styles, from  
classic to casual as  
contemporary life.



nt 2311 | nt 2312



nt 235 | nt 2302



nt 2309 | nt 2315

head: PA511F e PA511M



## P L E X - T   B Y   E X P O R

ULTRA-RESISTANT HIGH-PERFORMANCE  
MATERIAL

LIGHTWEIGHT, EASY AND PRACTICAL TO HANDLE

STATE-OF-THE-ART CONTEMPORARY  
DESIGN

WORLDWIDE TESTED  
AND APPROVED  
TECHNOLOGY

ECOFRIENDLY - 100% RECYCLABLE



Inspired by the purpose of enhancing a **balanced connection** with **our ecosystem**, **EXPOR** mannequins are manufactured with exclusive **Plex-T** resin, with unique design for flawless trim. **EXPOR** mannequins are lightweight and easy to handle.



CORP 250 | CORP 243

head: PA50M e PA50F

CORP 245 | CORP 248



nt 2301 | nt 2307

CORP 062

head: PA541F e PA543M

nt 2305 | nt 231

CORP 060

nt 2303

CORP 215

nt 2302 | nt 232

CORP 229 CORP 046



head: PA511F



head: PA511M





CORP 228

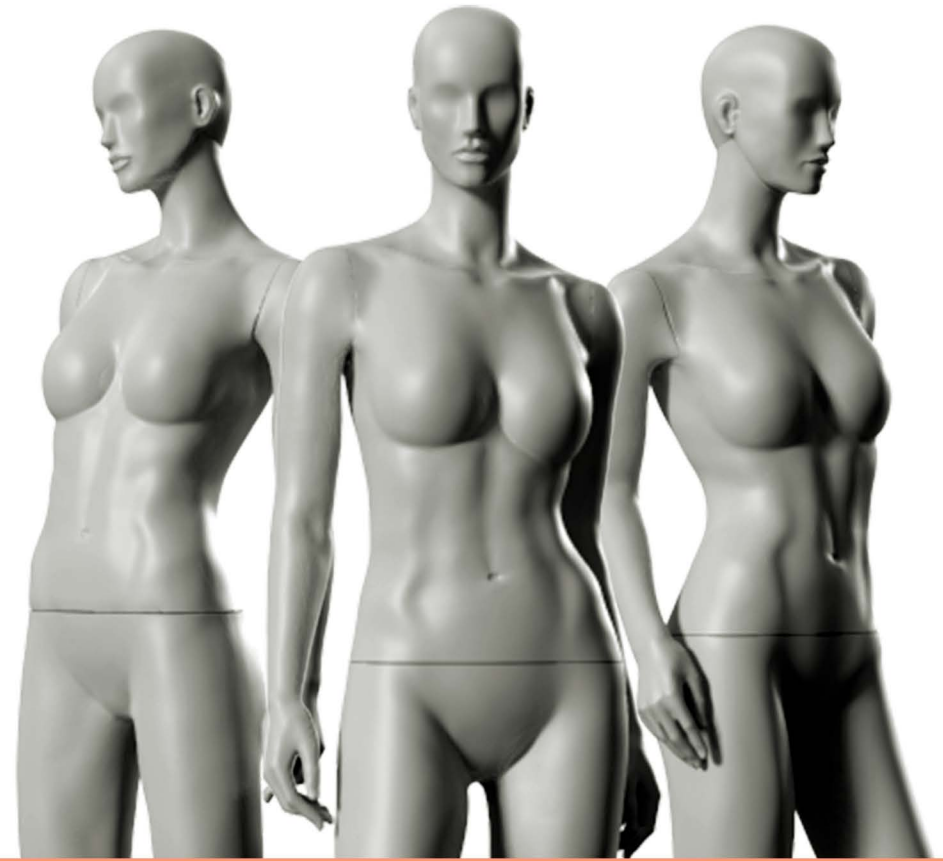


CORP 227

head: PA502F e PA502M



CORP 219



nt 2305 - PA539F

RED AND PINK



nt 2316 - 541F  
CORP065



nt 2302 - 524F  
CORP242



nt 2307 - 524F  
CORP063



nt 236 - 524M  
CORP217



nt 235 - 524M  
CORP217

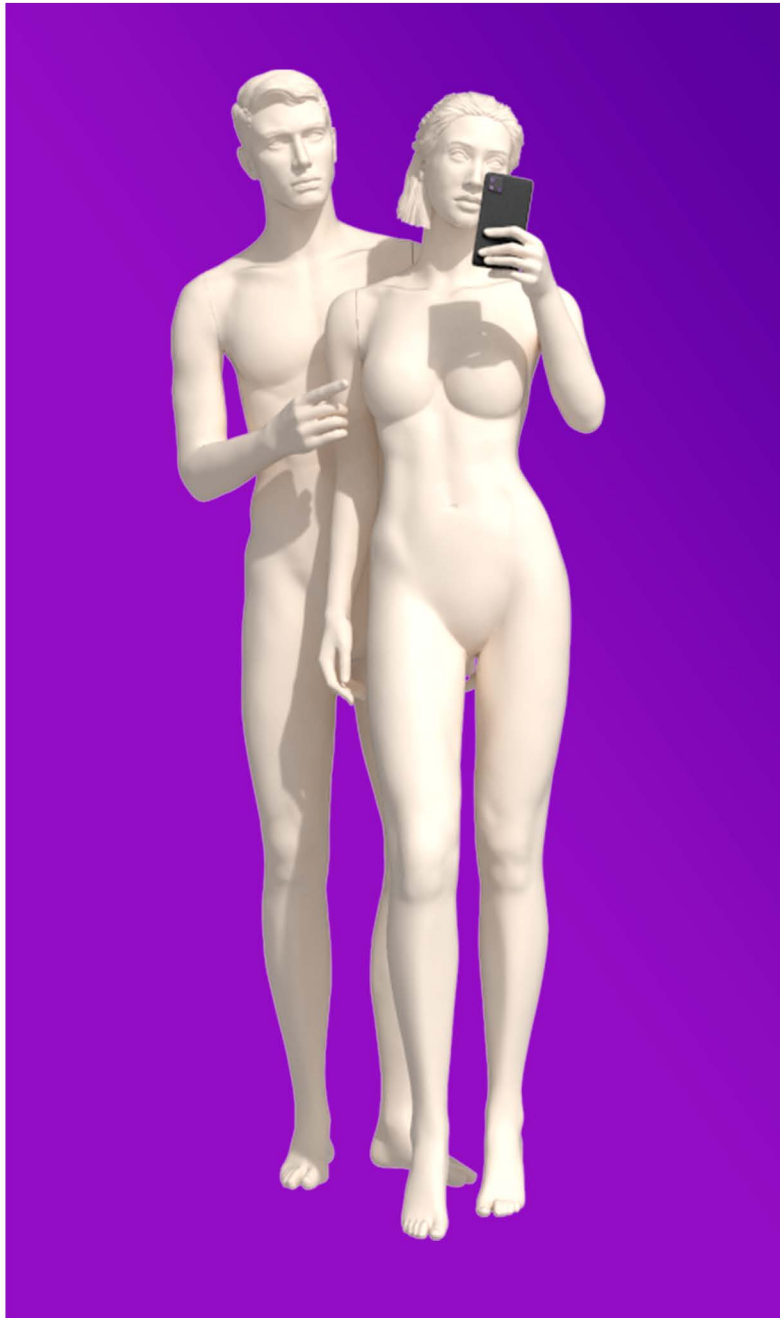


**NEXT  
COLLECTION  
IS THE NEW  
BASIC.**





nt 2303 - PA523F



nt 233 - Isaac | nt 2317 - River





nt 2309 - Kim | nt 236 - Park | nt 232 - Olu | nt 2316 - Zayla | nt 2307 - River  
COR 403



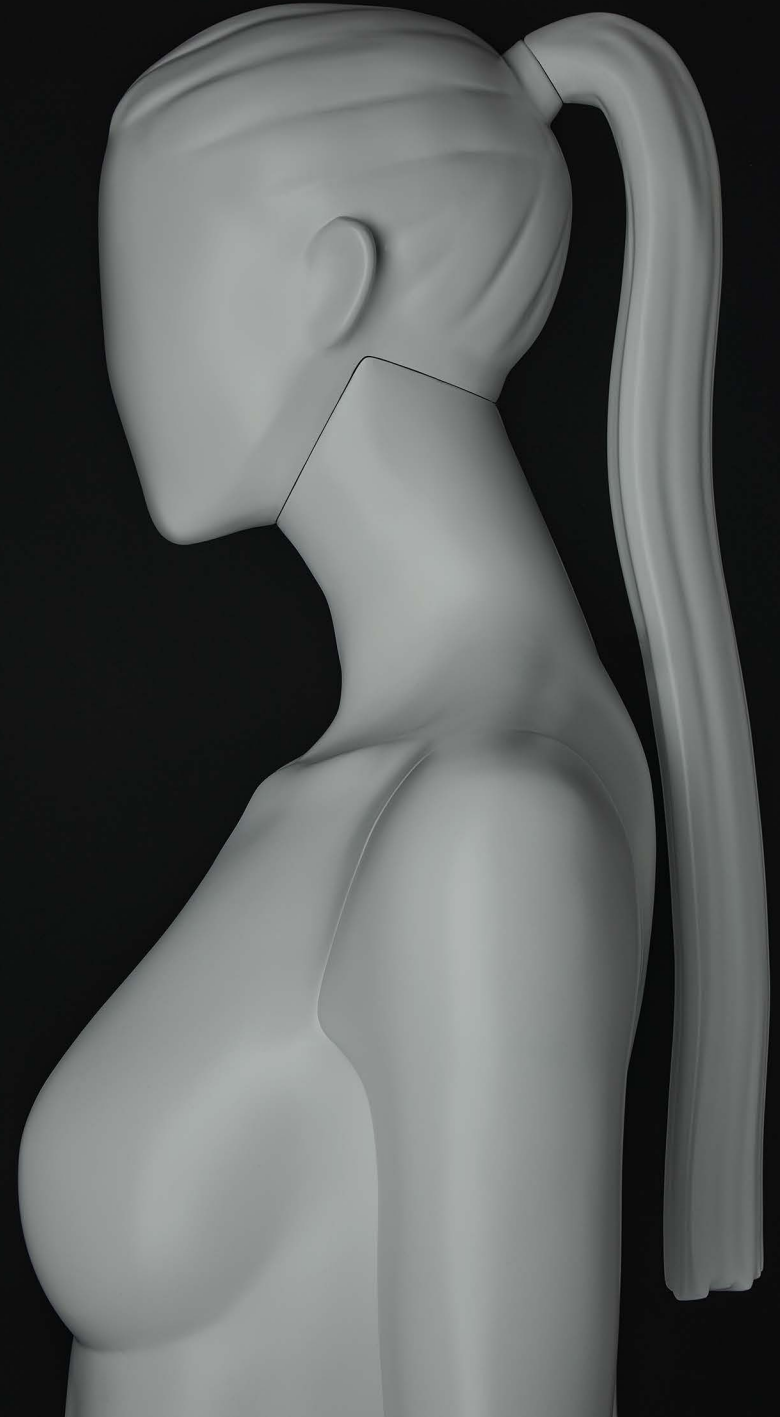


nt 233 - 544M  
COR 337



nt 2314 - 546F  
COR 023

nt 2315 - 544F  
COR 007



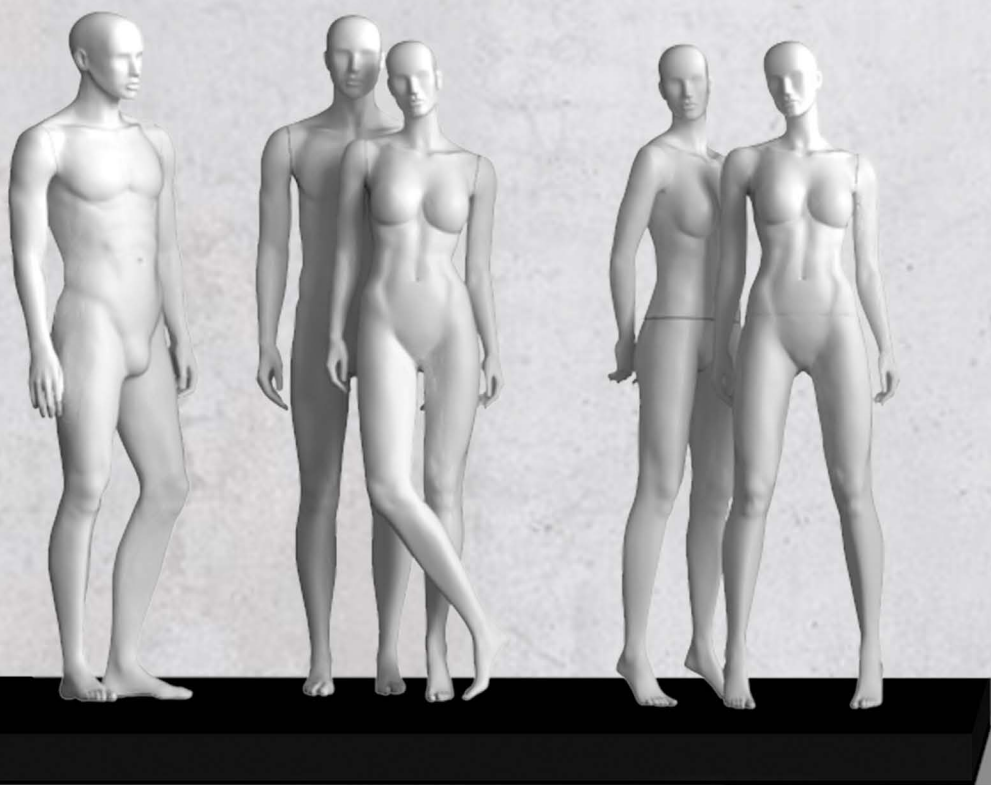


An authentic collection that expresses  
the most different trends.



nt 2303 | nt 234  
head: PA547F e PA547M

nt 2308 | nt 2305 | nt 2316  
CORP 062



nt 232    nt 231 | nt 2305

head: PA539F e PA539M

nt 2313 | nt 2303



nt 2302 | nt 2314    nt 2307 | nt 234



nt 2311 | nt 2312

CORP 105



nt 237 - PA547M | nt 2318 - PA547F



	CM	POL
OMBRO À OMBRO SHOULDERS	48,5	18"
BUSTO BUST	87,5	34"
CINTURA ALTA HIGH WAIST	64,5	25"
CINTURA BAIXA LOW WAIST	85	33"
QUADRIL HIPS	92,3	36"

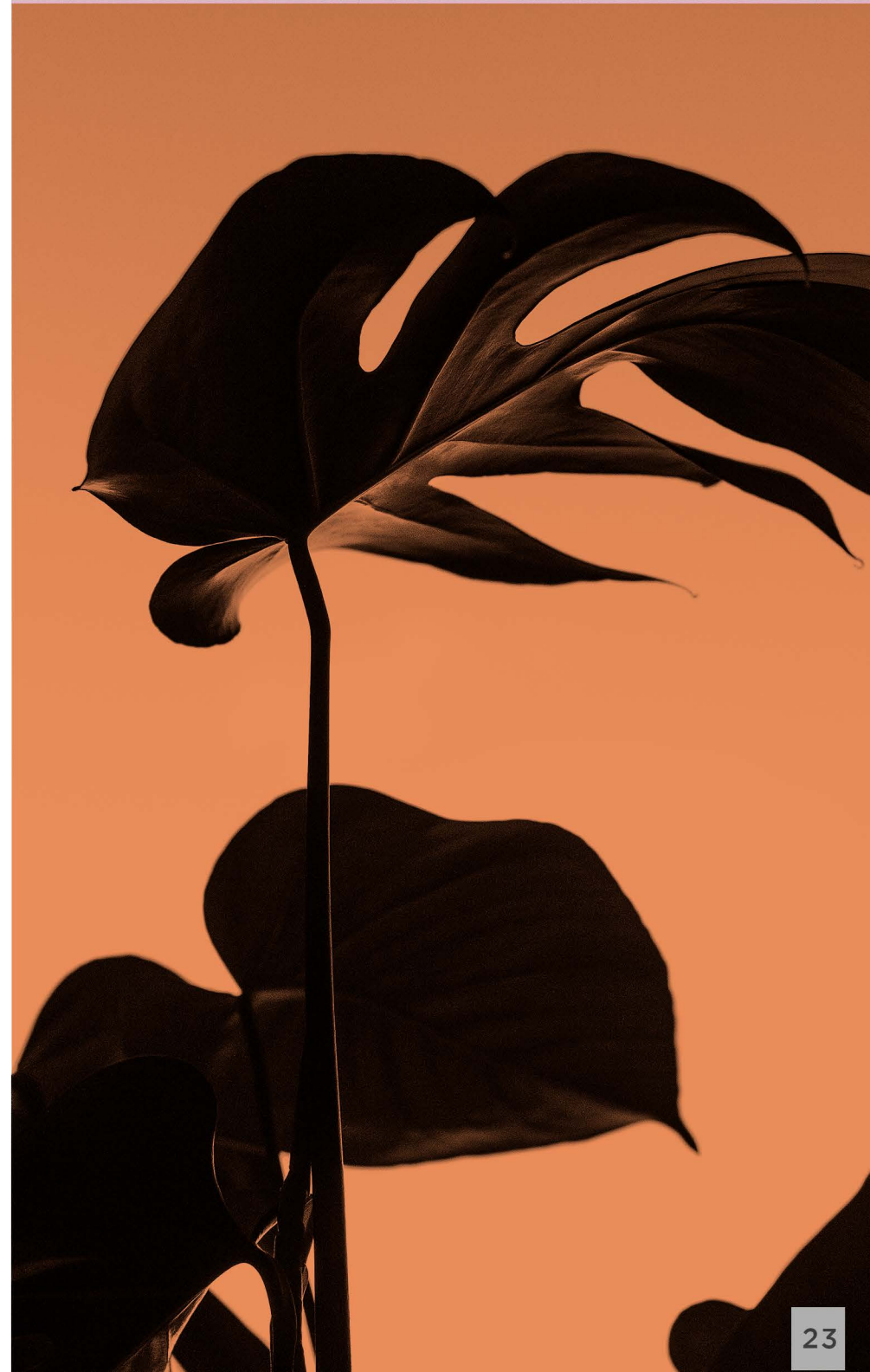


	CM	POL
ALTURA HEIGHT	182	71"

FEMALE MODEL

	BR	US
SAPATO SHOES	37	8

nt 2301





	CM	POL
OMBRO À OMBRO HOMBRO A HOMBRO	59,5	23"
BUSTO	98,6	39"
CINTURA ALTA	78,2	30"
CINTURA BAIXA	87,5	34"
QUADRIL CADERA	96,4	37"

	BR	US
SAPATO ZAPATO	42	10 <sup>1</sup> / <sub>2</sub>

	CM	POL
ALTURA	188	74"

MALE MODEL

nt 231





nt 2301



nt 2302



nt 2303



nt 2305



nt 2307



nt 2308



nt 2309



nt 2311 | nt 2312



nt 2313



nt 2314



nt 2315



nt 2316

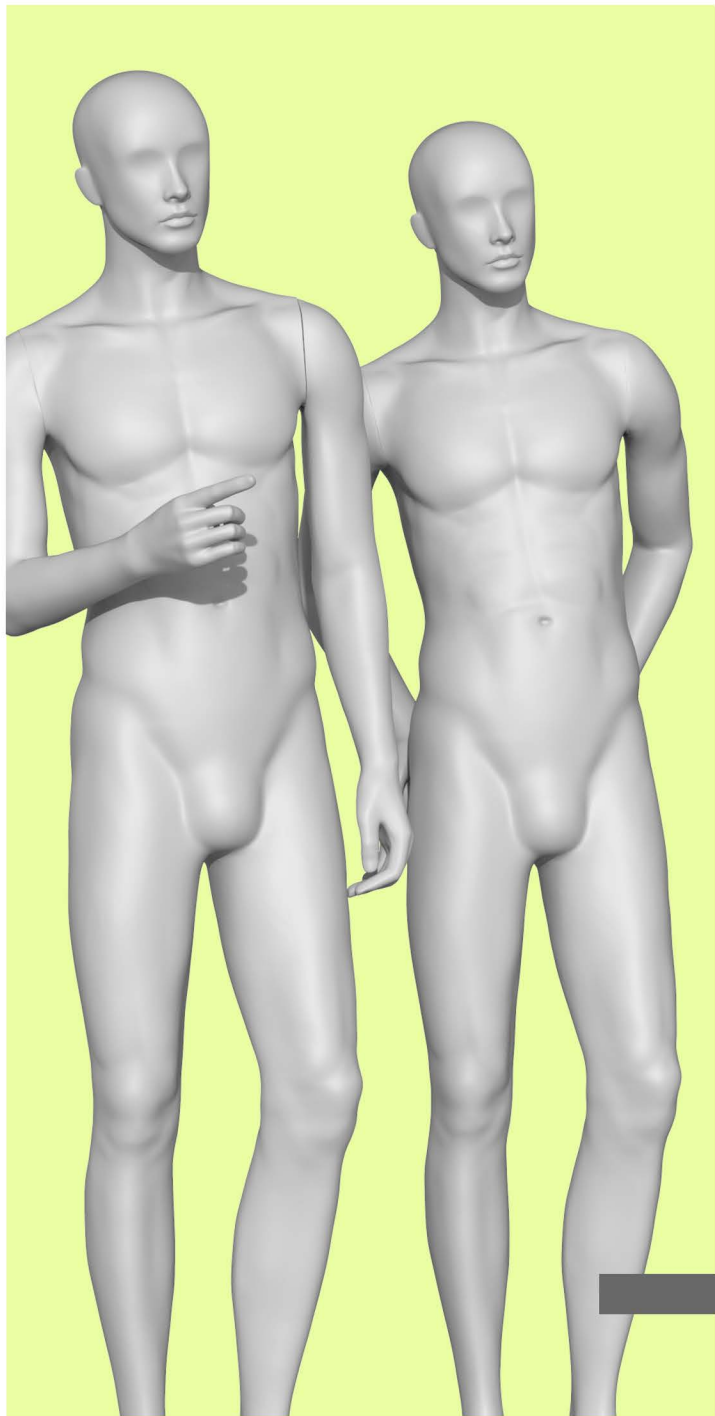


nt 2317



nt 2318





nt 231



nt 232



nt 233



nt 234



nt 235



nt 236



nt 237



bmnt 2301



bmnt 2305



bmnt 2313



bnt 2301



bnt 2305



pnt 231



pnt 232



pnt 2301



pnt 2302



pnt 2305

B R A Z I L

C O L O M B I A

M E X I C O

C H I L E

P E R U



[www.expor.com](http://www.expor.com)